

# Installing Komplete 5 with Direct Install

This document discusses how to use Receptor's Direct Install feature to install and update Komplete 5, its plugins, and its libraries.

In order to install Komplete 5 (or any of its associated plugins), you need the following:

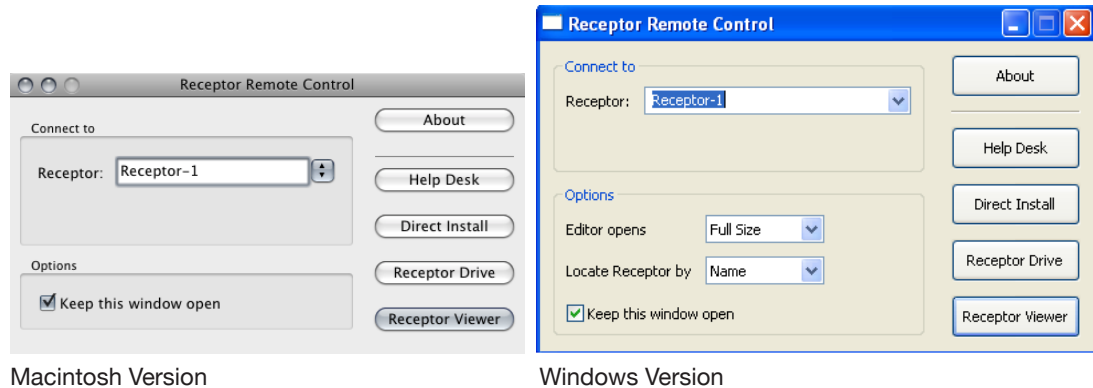
- Receptor System 1.7 or higher
- Receptor Remote Control 1.2 or higher (bundled with Receptor Tools 1.2)
- UniWire 1.2 or higher (bundled with Receptor Tools 1.2)

## Launching Direct Install

In order to use Direct Install you need to have both your Receptor and your host computer connected to a network with internet access. See your Receptor documentation or the online networking videos if you don't know how to do this.

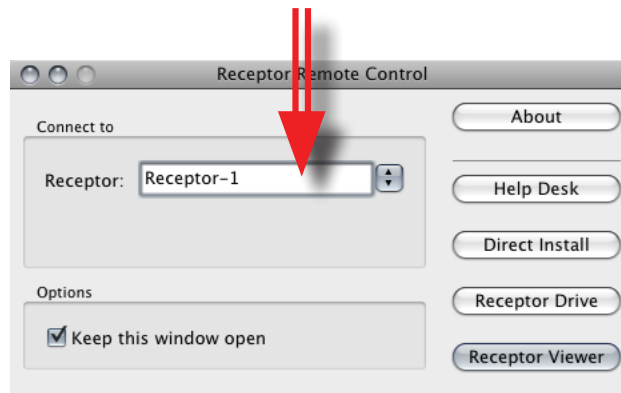
- 1 On your host computer, double-click the Receptor Remote Control application.

*The Receptor Remote Control window appears on your computer's desktop.*

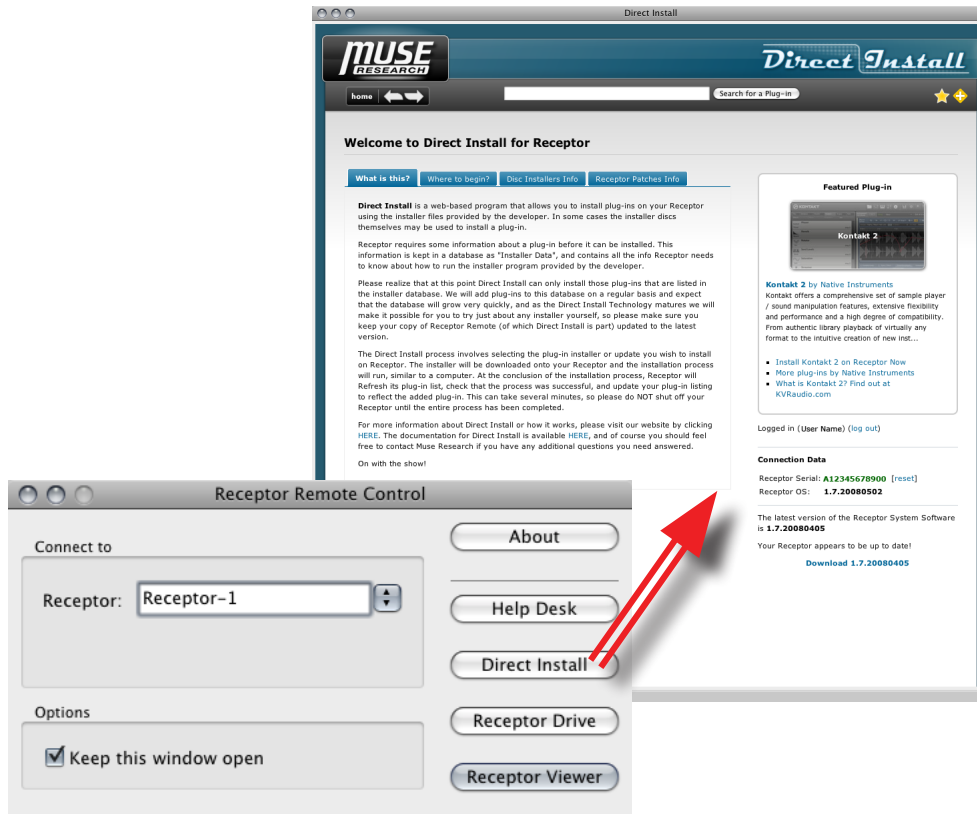


- 2 In the "Connect To" area, select the name of the Receptor on which you want to install software.

*If you have only one Receptor, it will obviously appear as the default selection.*



- Click the **Direct Install** button to open the Direct Install window.



*IMPORTANT: All information in the Direct Install window is dynamically generated and comes from the internet. Consequently, as with any typical web page, the appearance of the Direct Install window is likely to change over time. That said, this section discusses Direct Install's functionality and appearance at the time of the Receptor v1.7 software release.*

## Finding Komplete 5 in the Plug-in Compatibility Database

Before you can install Komplete 5 directly on Receptor, Direct Install first requires some specific information about the installer. This is called *Installer Data* and it's contained in the Receptor Plug-in Compatibility Database. The Installer Data contains everything Receptor needs to know to run the installer program on Receptor.

So, you must first search the Compatibility Database for the plugin you wish to install. For example:

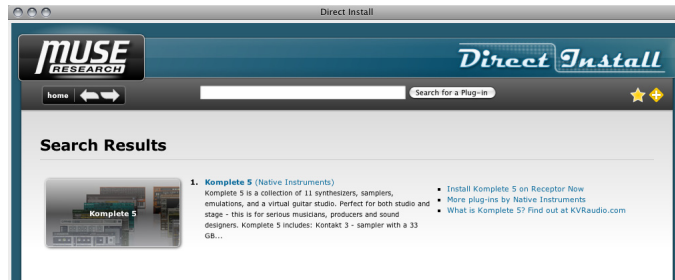
- In the Search Field, begin typing "Komplete 5."

*As you type, the drop down list will show you all the plugins that contain the text you're typing.*



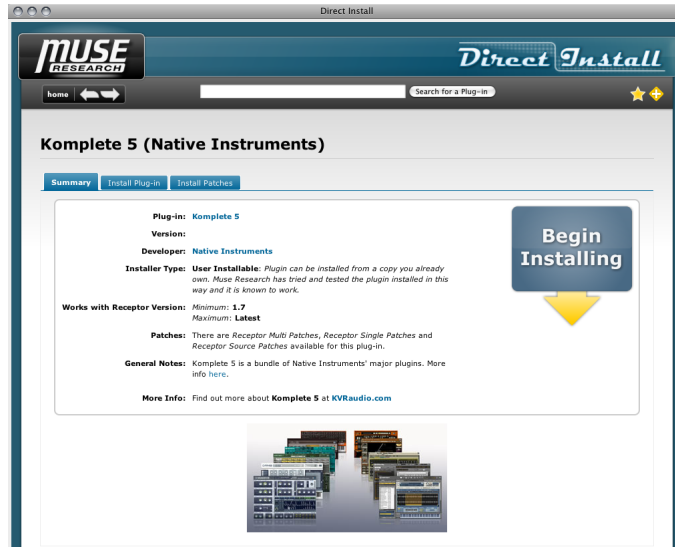
- 2 Select **Komplete 5** from the drop-down list (highlighting it), then click **Search for a Plug-in**.

*The Search Results page will display all the plugins that matched your search criteria.*



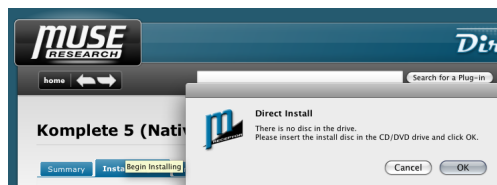
- 3 Click the Komplete 5 icon in the Search Results's page.

*The Plugin's Direct Install Status window appears.*

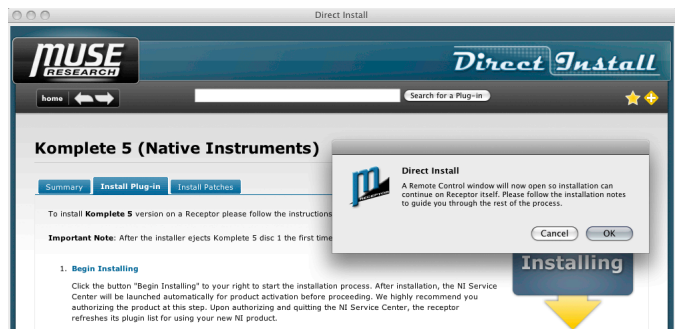


## Installing Your Komplete 5 Plugins

- 1 On the Komplete 5 Direct Install page, click **Begin Installing**.
- 2 You will be asked to insert your Komplete 5 Installation Disc. Insert the disc in your computer's optical drive and click **OK**.

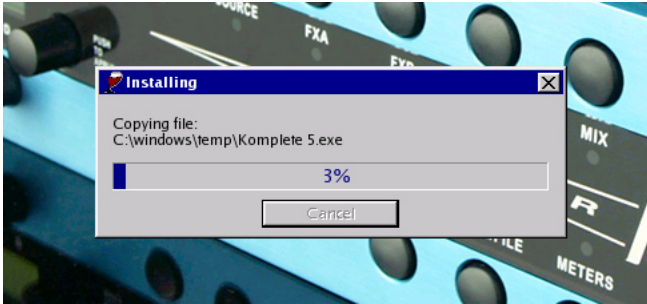


- 3 Once Direct Install recognizes the installation DVD, you'll see a dialog box informing you that a Remote Viewer window will open. Click **OK** to allow Receptor's Remote Viewer window to open.



- 4 Receptor's Remote Viewer opens.

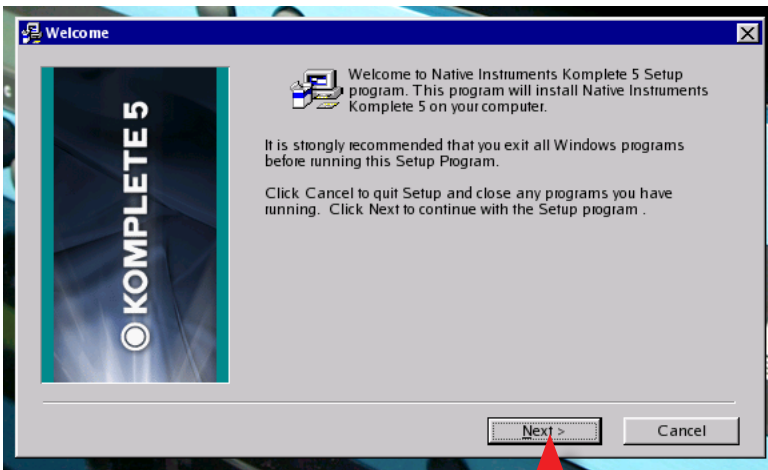
*Instead of seeing the usual Receptor User Interface, you'll see a background image and some status windows. Here, you'll see that Direct Install is now copying the installer application from the DVD to your Receptor's hard drive.*



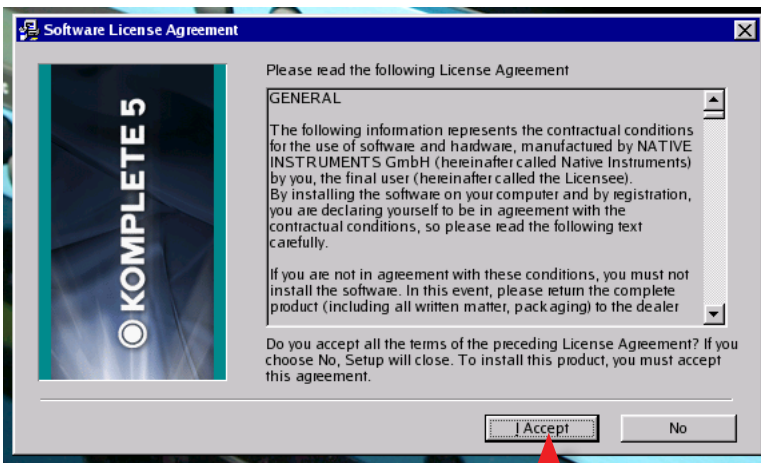
*NOTE: The Komplete 5 installer is unusually large, and may take up to a half-hour to transfer to your Receptor. Other installers (such as small Komplete updates that you download from the web) may contain very little data and, thus, will transfer quickly.*

*Once Direct Install has copied the installer to your Receptor, it will begin to run on Receptor and, using the Remote Viewer, you can see and control the installation as if it were running on your desktop computer.*

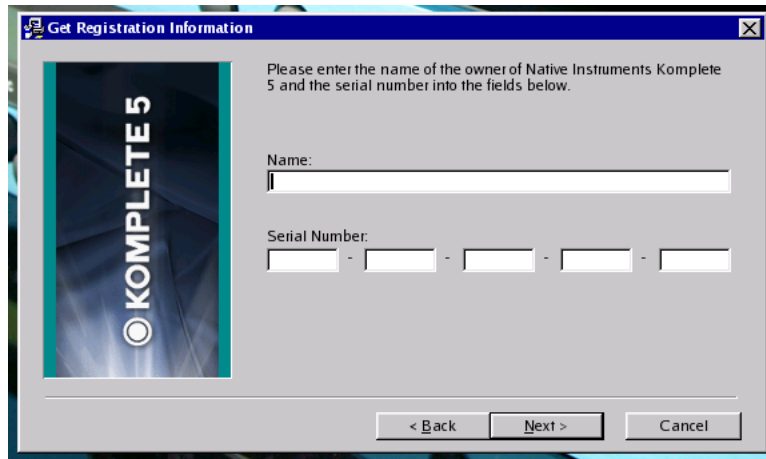
- 5 Click **Next** to start the installer application.



- 6 Next, click **I Accept** if you agree with the Komplete 5 license.

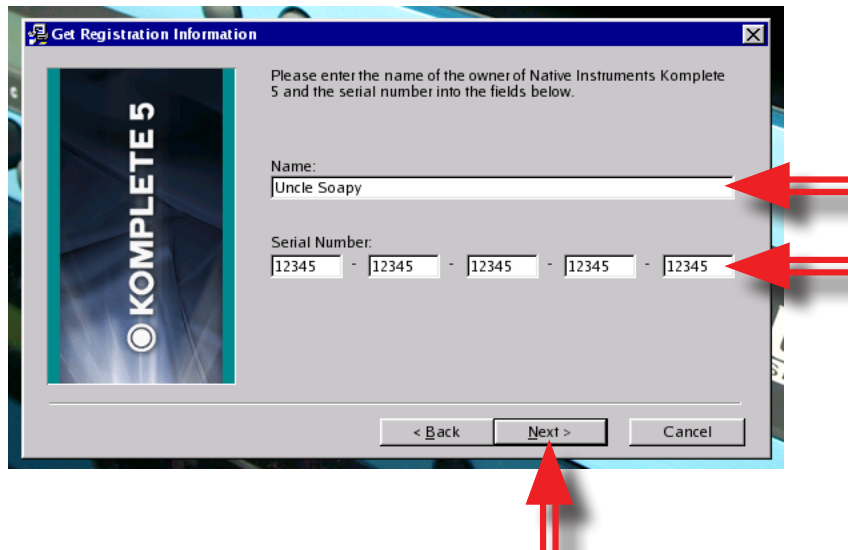


- 7 You will then be asked to enter your Complete 5 user name and serial number.



The 'Get Registration Information' dialog box has a title bar with a close button. On the left is a vertical banner with the 'COMPLETE 5' logo. The main text reads: 'Please enter the name of the owner of Native Instruments Complete 5 and the serial number into the fields below.' There are two input fields: 'Name:' with a text box, and 'Serial Number:' with five separate boxes separated by hyphens. At the bottom are three buttons: '< Back', 'Next >', and 'Cancel'.

- 8 Enter your name and Complete 5 serial number, click **Next**.



This screenshot shows the 'Get Registration Information' dialog box with the 'Name' field filled with 'Uncle Soapy' and the 'Serial Number' field filled with '12345' in each of the five boxes. Red arrows point to the 'Name' field, the 'Serial Number' boxes, and the 'Next >' button.

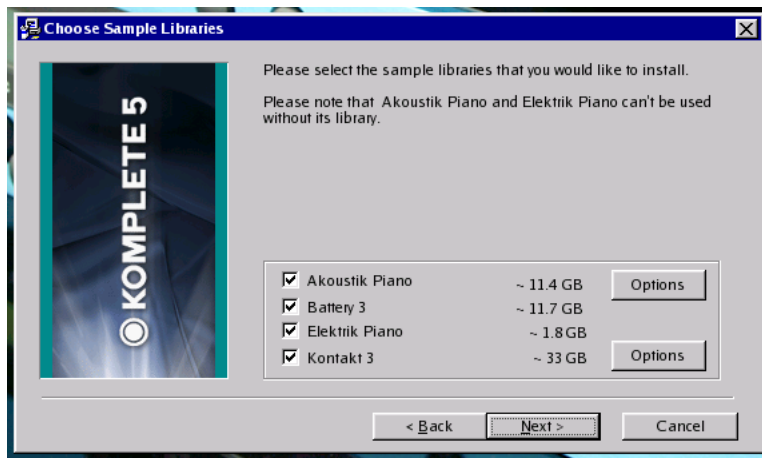
- 9 Next, you'll be asked which Complete 5 plugins you wish to install. You can select one, some, or all the plugins. For this tutorial, we've selected all the plugins. Click **Next**.



The 'Choose Products' dialog box has a title bar with a close button. On the left is a vertical banner with the 'COMPLETE 5' logo. The main text reads: 'Please select the products that you would like to install. You can install additional products at a later time by restarting the installer. Please note that you need to install and run the NI Service Center to activate Complete 5.' Below this is a list of products with checkboxes and their sizes. All checkboxes are checked. At the bottom right, it says 'All Products: ~ 3.6 GB'. At the bottom are three buttons: '< Back', 'Next >', and 'Cancel'. A red arrow points to the 'Next >' button.

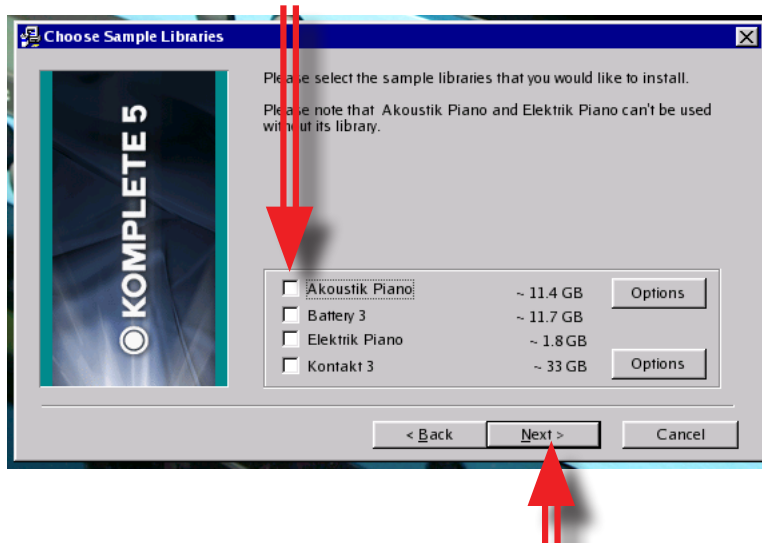
Product	Size
<input checked="" type="checkbox"/> Absynth 4	~ 720 MB
<input checked="" type="checkbox"/> Akoustik Piano	~ 120 MB
<input checked="" type="checkbox"/> B4 II	~ 160 MB
<input checked="" type="checkbox"/> Battery 3	~ 115 MB
<input checked="" type="checkbox"/> Elektrik Piano	~ 70 MB
<input checked="" type="checkbox"/> FM8	~ 200 MB
<input checked="" type="checkbox"/> Guitar Rig 3	~ 410 MB
<input checked="" type="checkbox"/> Kontakt 3	~ 470 MB
<input checked="" type="checkbox"/> Massive	~ 220 MB
<input checked="" type="checkbox"/> Pro53	~ 20 MB
<input checked="" type="checkbox"/> Reaktor 5	~ 1050 MB

- 10 If, in the previous step, you selected one or more sample-based plugins, you'll next be asked whether or not to install the sample libraries.



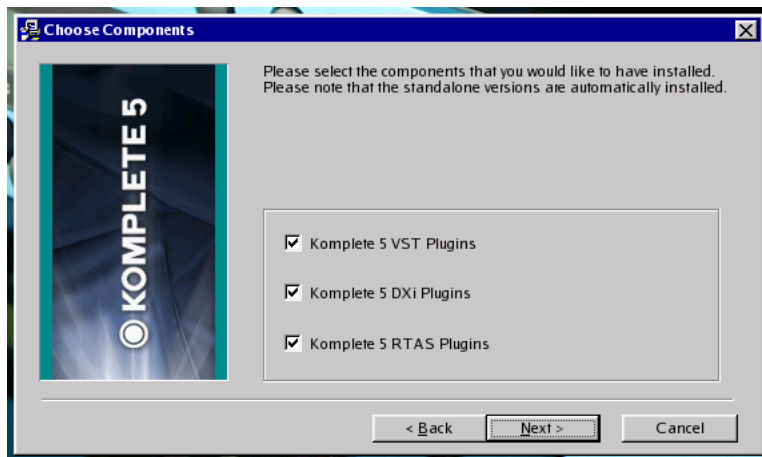
*IMPORTANT: Depending on the configuration of your network and the amount of traffic on that network, it can take over 24 hours to install all the sample libraries. For this reason, Muse Research **strongly** recommends that you uncheck all the sample libraries.*

- 11 Uncheck all the libraries, and click **Next**.



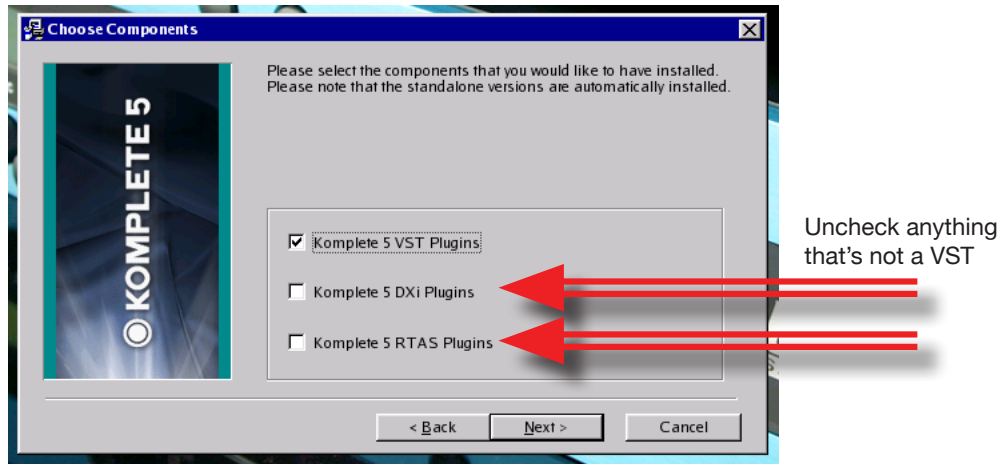
*NOTE: You will install these sample libraries later, at your convenience. Library installation is discussed in the section called "Installing Komplete 5 Sample Libraries" near the end of this document.*

- 12 You will next be asked which type of plugin to install.

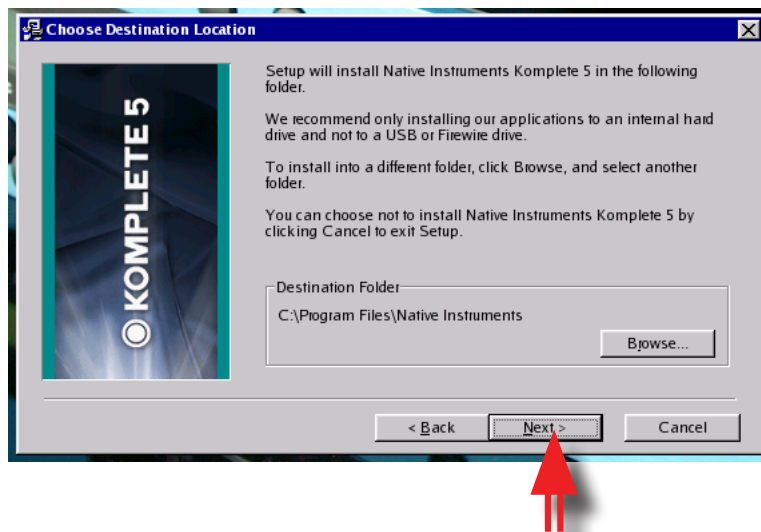


*Receptor supports only VST plugins, so there's no need to install DXi or RTAS versions.*

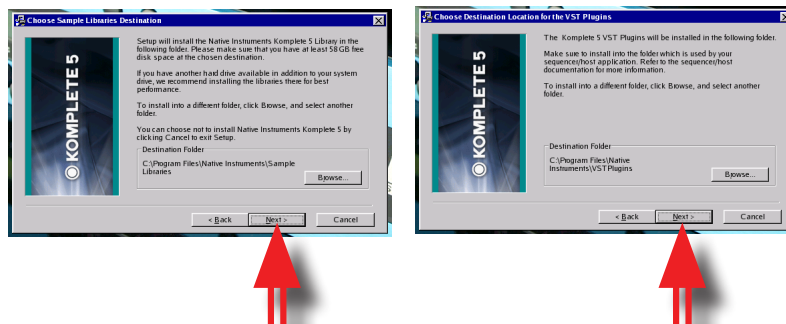
- 13 Uncheck everything **except** the VST version, and click **Next**.



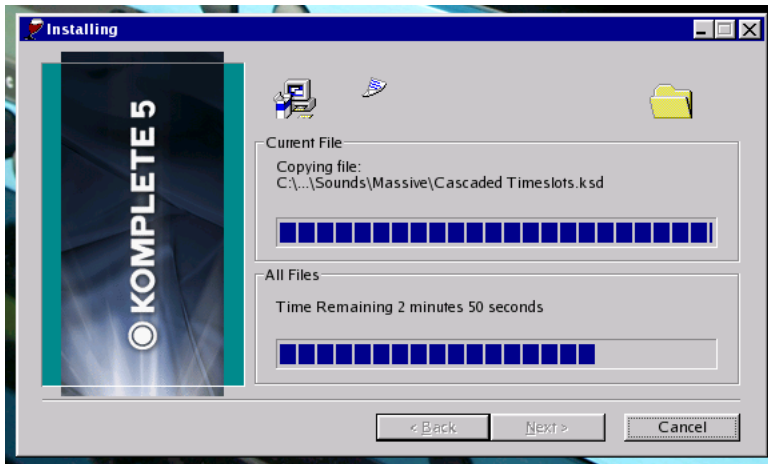
- 14 Next, the Native Instruments installer will ask where you want to install the software. You will use the default destination folder, so simply click **Next**.



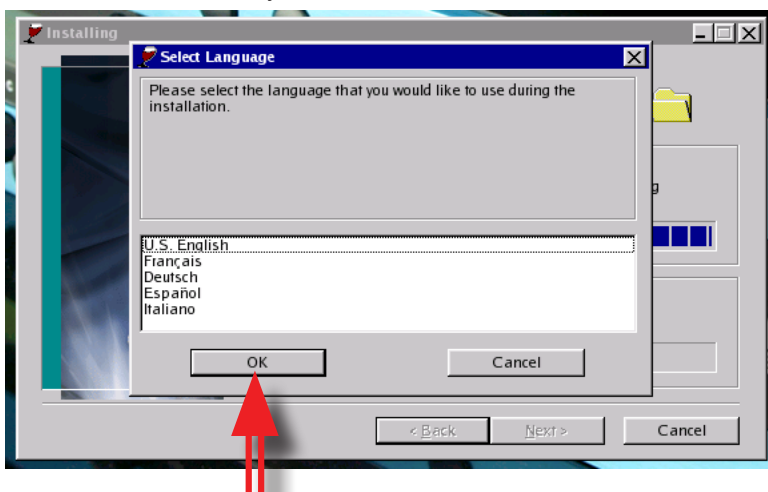
- 15 Depending on what, exactly, you're installing, more dialogs will appear asking you to choose various file destinations. You will always want to accept the default destinations, so just click **Next** whenever you see one of these destination dialogs.



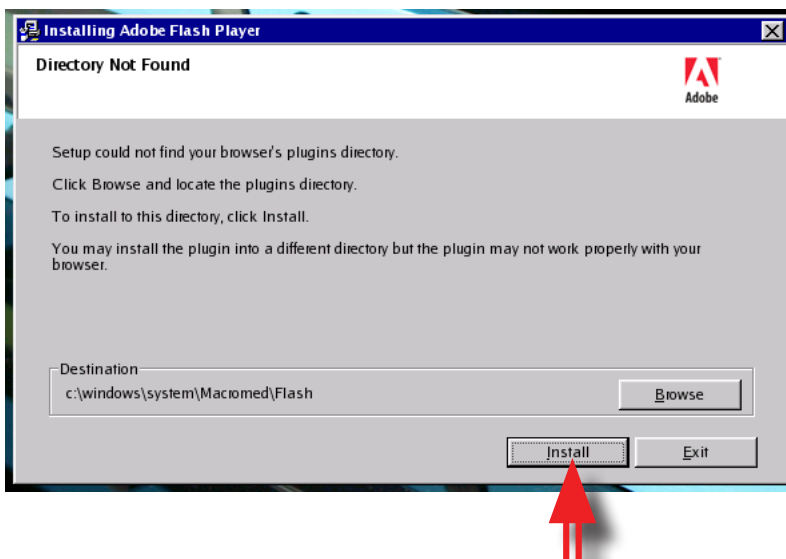
- 16 The installer will begin the process of installing all the Komplete 5 plug-ins that you requested in step 7.



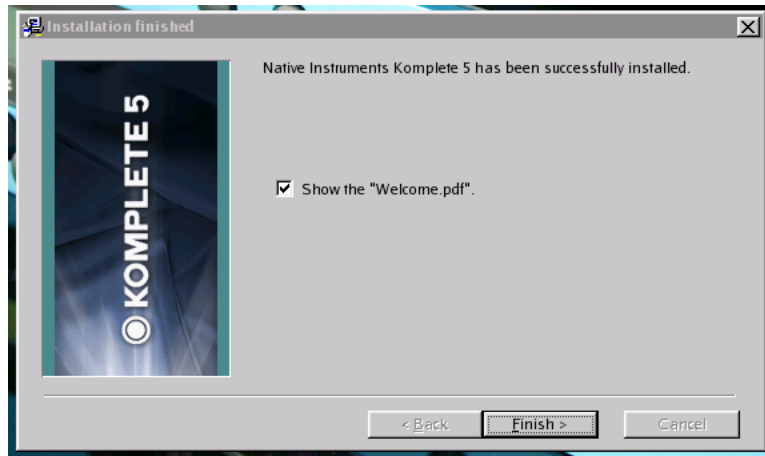
- 17 At some point in the installation process, you'll be asked which language you want to use for the remainder of the installation. Make your selection and click **OK**.



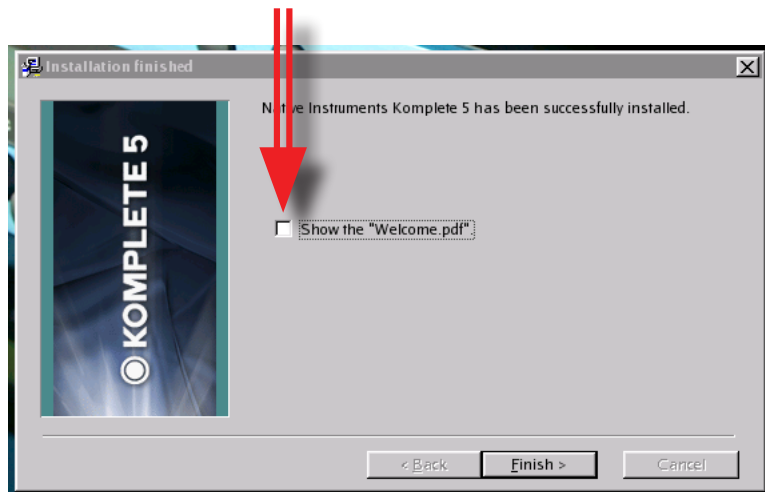
- 18 You will then see a dialog asking if you want to install Adobe Flash Player. You do, so click **Install**.



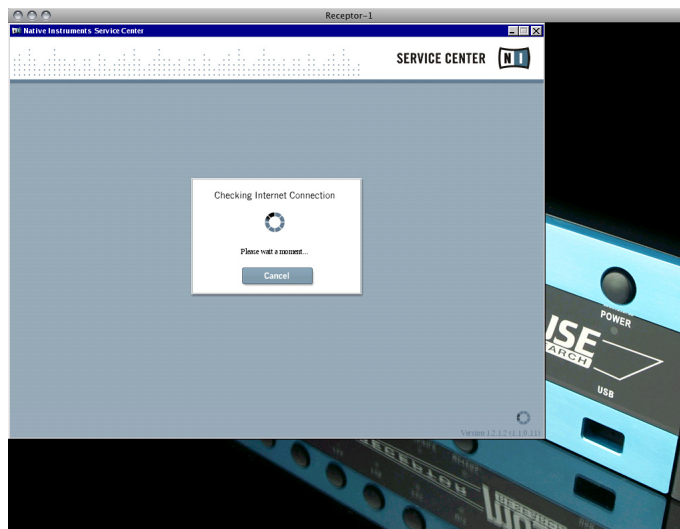
- 19 The installation process will continue and, when finished, you'll see a dialog asking if you want to view the Welcome PDF.



- 20 **Uncheck** (disable) this option (since there is no pdf viewer on Receptor), and click **Finish**.  
Uncheck the "Welcome.pdf" display option



- 21 After a minute or so, the Native Instruments Service Center will launch.



*The following section discusses how to use Service Center to authorize plugins on Receptor.*

# Authorizing Plugins Using Service Center

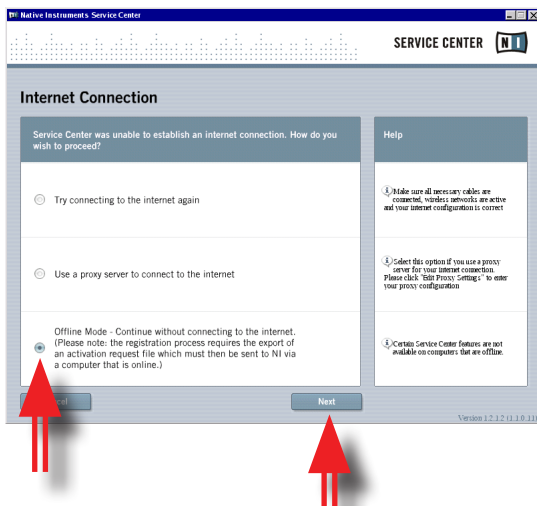
During a Complete 5 installation, the Service Center will open automatically as part of the installation process. The Service Center is an application that Native Instruments uses to authorize your plugins. The following steps describe how to run Service Center on Receptor.

**NOTE:** If you wish, you can manually launch the Service Center at some later date by going to Receptor's **SETUP** view, clicking "Run Utility" in the **INSTALL** Section and, in the pop-up menu that appears, clicking "Service Center."

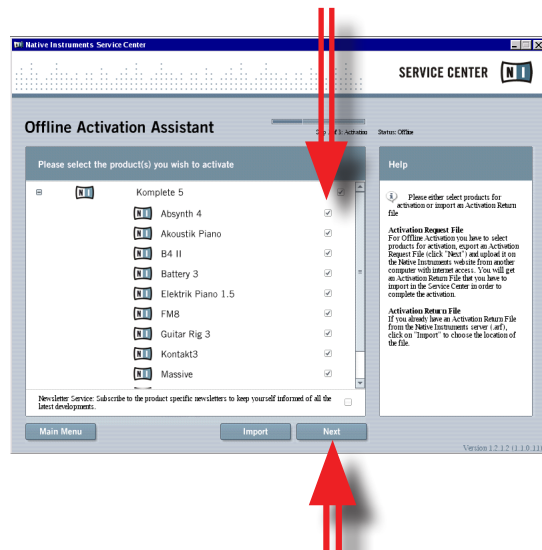
- 1 When the Native Instruments Service Center launches, it will first check for an Internet connection. Because Receptor is not connected directly to the internet, you can simply click the **Cancel** button when you see this dialog appear.



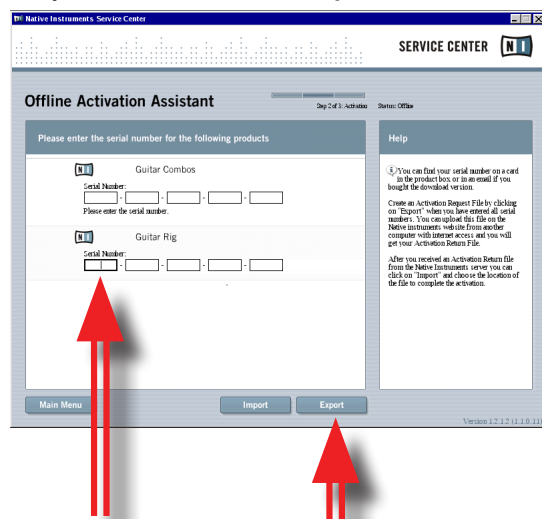
- 2 From the Internet Connection window select the "Offline Mode" option, and click on "NEXT".



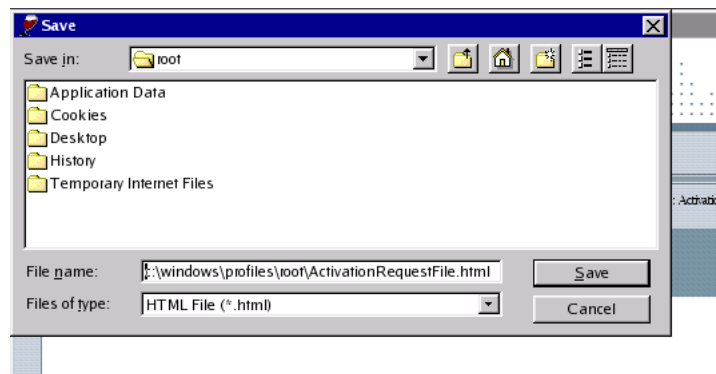
- 3 The next screen shows those plugins that need authorized. Select the ones you wish to authorize by checking their authorization box to the right of the plugin name. You can authorize more than one product at a time with Service Center. Once you've selected the products you wish to authorize, click **Next**.



- 4 The next screen requests that you enter the serial numbers for all the products you selected. It is essential that you enter in the serial number EXACTLY as it appears on your serial number card. Double check your entry, and then click on the **Export** button to save the activation request file.

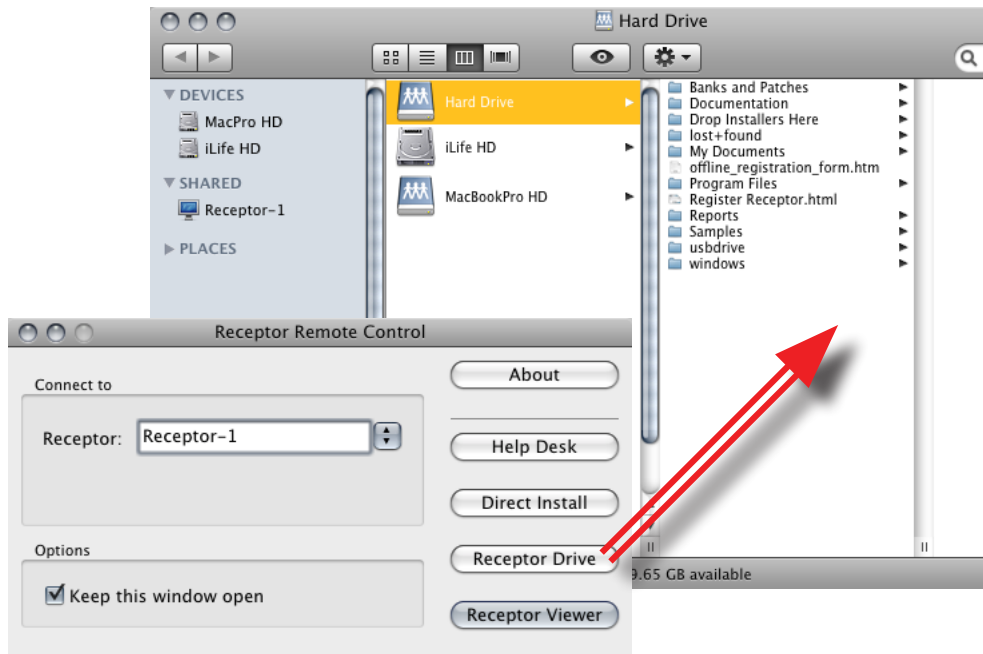


- 5 A dialog box appears asking where you want to save the Activation Request File. Simply accept the default file name and path: and click **Save**.

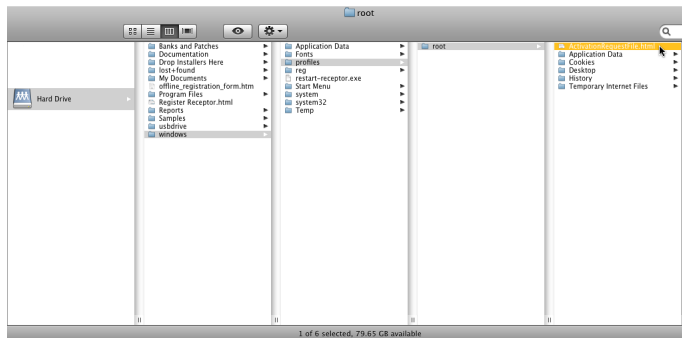


*The AuthorizationRequestFile.html is saved to your Receptor Hard Drive at \windows\profiles\root.*

- 6 From your Receptor Remote Control application, click the **Receptor Drive** button to open Receptor's Hard Drive on your computer.



- 7 Navigate to the **ActivationRequestFile.html** on your Receptor. You'll find it on our Receptor in Hard Drive/ windows/profiles/root/.



- 8 Double-click the **ActivationRequestFile.html** on your Receptor.



ActivationRequestFile.html

*NOTE: This works only if your Receptor and desktop computer are both connected to a network that is also connected to the internet (a requirement for using Direct Install). If not, you will need to drag this file to the desktop of a computer with internet access in order to proceed.*

- 9 Your default browser opens and you're given online instructions how to complete the authorization process. Simply click the **Send** button.



## NI Service Center Product Activation

Welcome to the Native Instruments Offline Activation process. Please follow the step-by-step instructions to activate your product:

1. Please save this "Activation Request" file as a HTML file onto a portable medium.  
Select FILE -> SAVE FILE AS... in the main menu of your browser. Then save the "Activation Request" file onto a USB stick or other portable medium.
2. Transfer the file to a computer with internet access.
3. Go online.
4. Open the file in your browser.
5. Please click on the button below. The NI registration page will open. Please follow the on-screen instructions. If you do not have an NI product account you will be prompted to create one.
6. Save the resulting "Activation Verification" file back onto your portable medium
7. Transfer back to the computer with your Native Instruments products.
8. Open the NI Service Center and import the "Activation Verification" file. The NI Service Center opens automatically with the import dialogue.
9. Your product has now been successfully activated.



Do you need help?

Please visit: [www.native-instruments.com/registersupport.info](http://www.native-instruments.com/registersupport.info)



- 10 The Native Instruments Service Center Activation Page Login page appears. Enter your NI username and password, then click **Submit**.

## SERVICE CENTER ACTIVATION PAGE

**Welcome to the Service Center Activation page.**

On this page you can download your personal Activation Return File. This file contains necessary Information for the activation of your products. Subsequently, you must also import the Activation Return File to the computer you have Native Instruments Service Center installed on.

The following information is a step by step procedural guide regarding the receipt of your Activation Return Files.

**Login**

Please login to the Native Instruments Website using your existing Native Instruments user account. If you don't yet have an account please choose "No, I don't have an NI account" and then click "Next" to register.

**Create a new user account**

Please fill in the following form to create your personal Native Instruments account. Please use a valid email address as critical data, such as product authorizations, will be sent to you via email. Please also state your correct postal address to ensure receipt of postal deliveries, eg. items purchased in the Native Instruments Online Shop or Native Instruments KOMplete supplements.

Press Next to confirm your data.

☒ Do you already have an NI account?: \*

☒ Yes - I already have an NI account

☐ No - I do not have an NI account

☒ Username: \*

Uncle Soapy

Password: \*


.....

Remember Login:

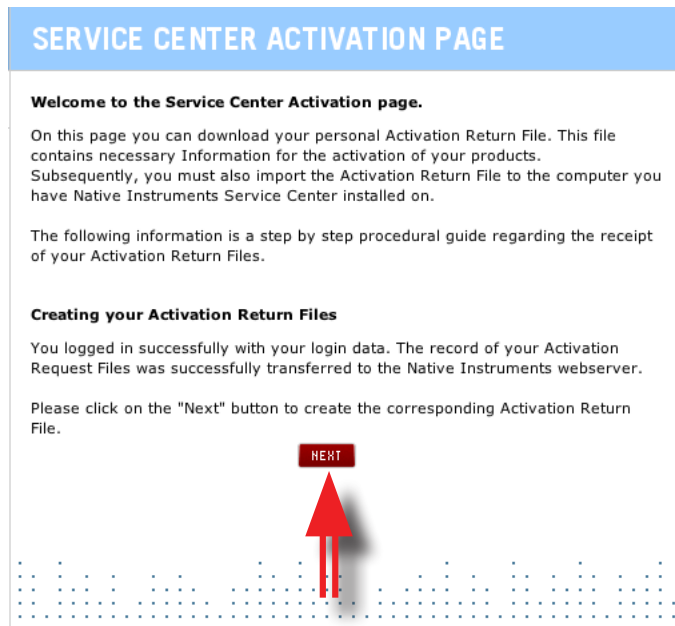
☐ Remember Login

\* Mandatory field

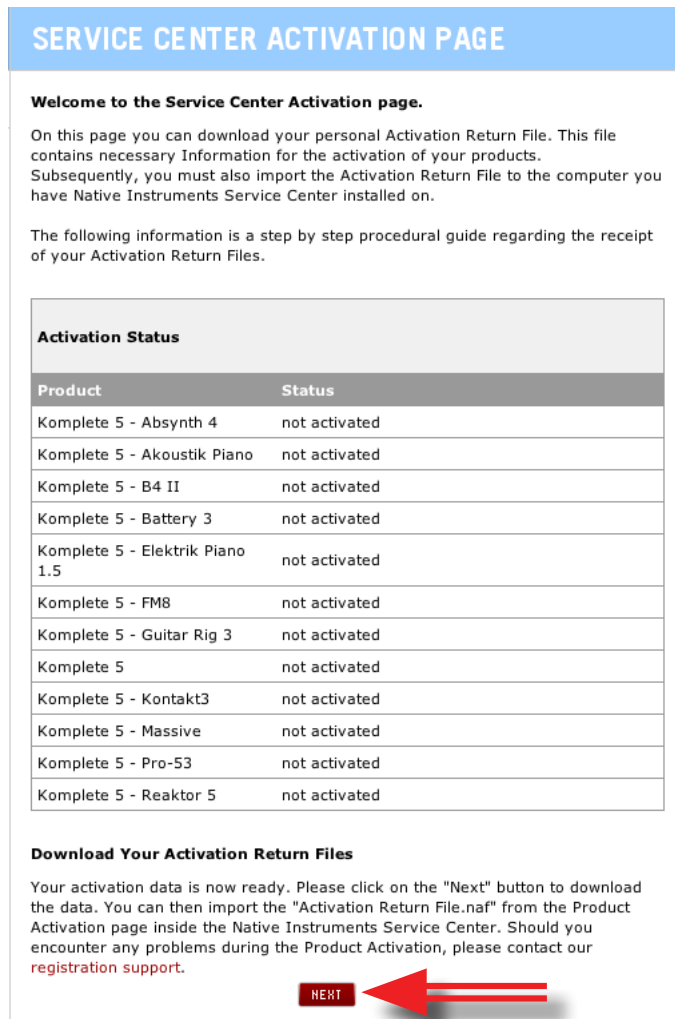
**SUBMIT**



- 11 The Service Center's Activation Welcome Screen appears. Click **Next** to move on.

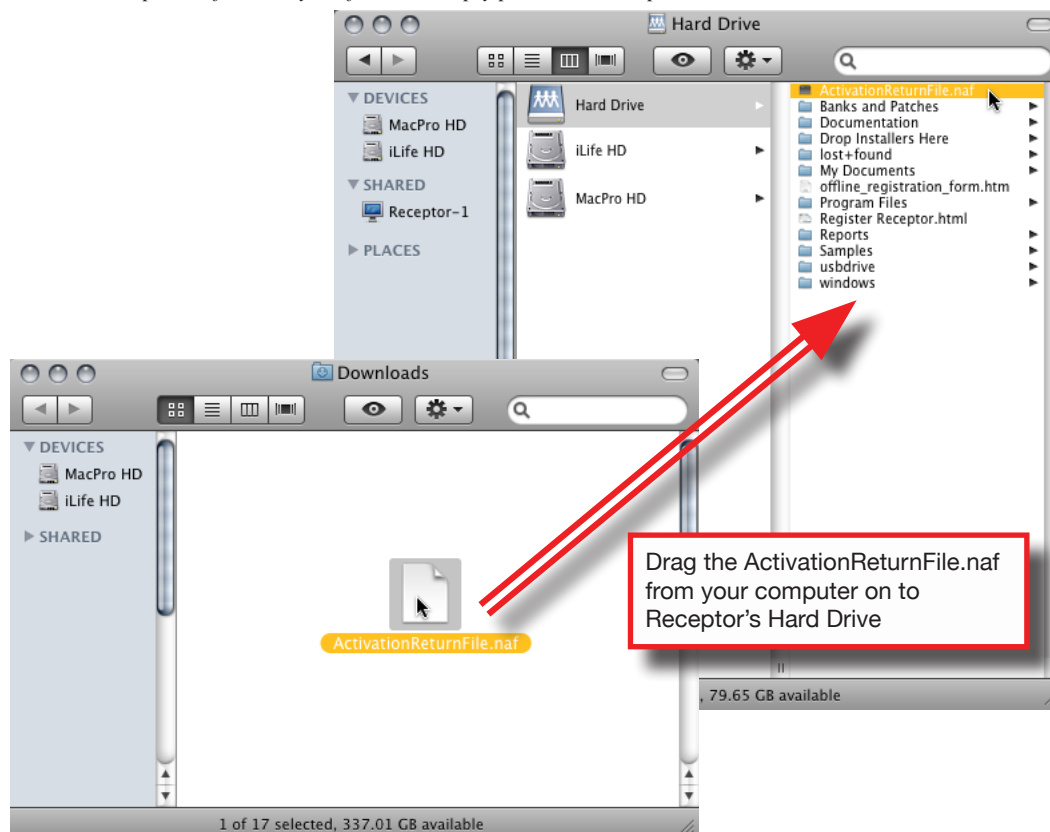


- 12 On the following page, you'll see a list of all the plugins requiring authorization. Click **Next**.

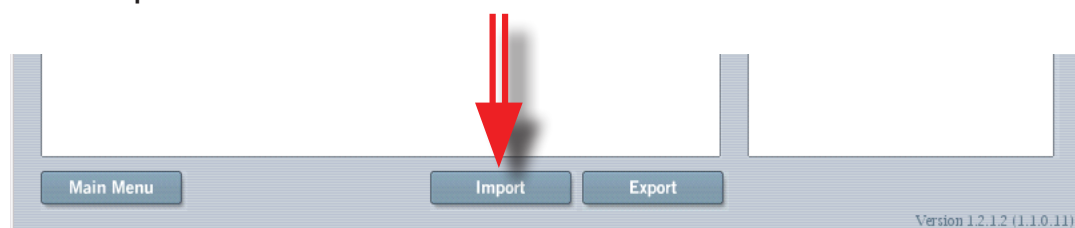


- 13 The ActivationReturnFile.naf is downloaded to your computer's default downloads folder. Drag the downloaded ActivationReturnFile.naf from your computer on to your Receptor's Hard Drive.

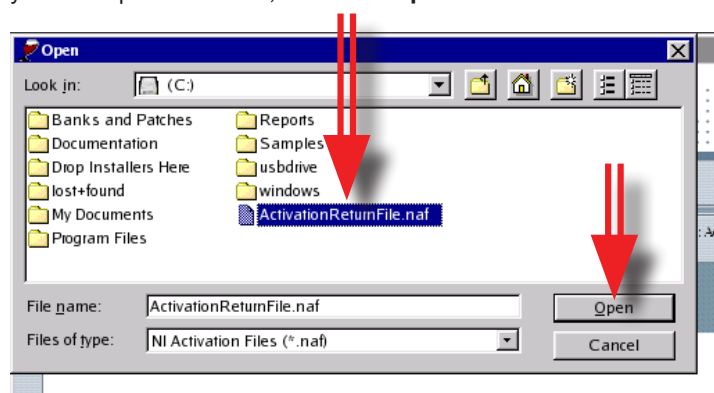
*NOTE: Don't put the file in any subfolders. Simply place it at Receptor's Hard Drive root level.*



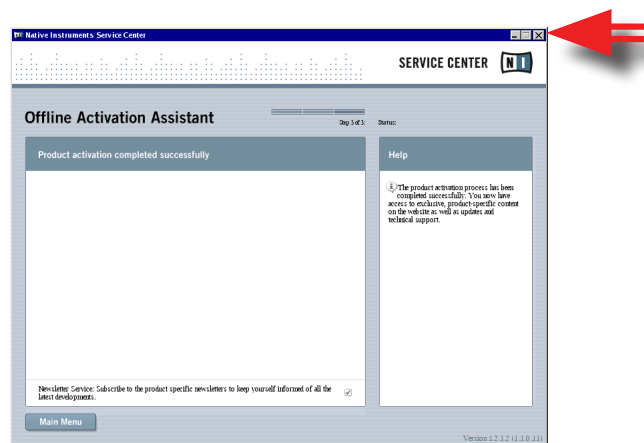
- 14 Look at the Receptor Viewer window (where the Service Center is currently running), and click the Service Center's **Import** button.



- 15 An file dialog appears in Service Center. Click on the **ActivationReturnFile.naf** that you just dragged to your Receptor's C: drive, then click **Open**.



- 16 Service Center authorizes your plugins and reports that activation is successful. Close the Native Instruments Service Center by clicking the **X** in the top-right corner of the window.



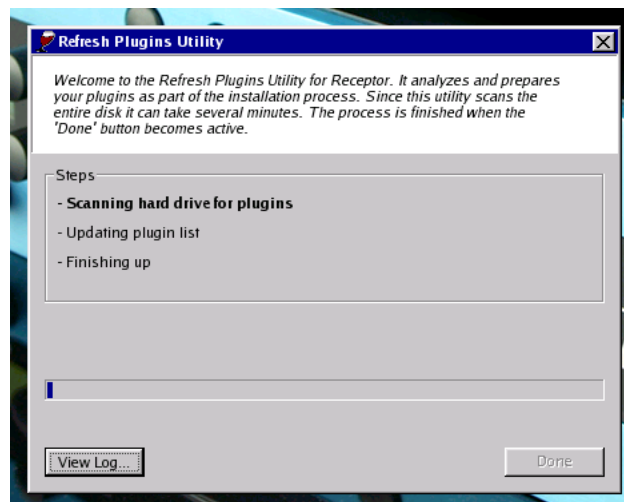
You're almost done! Receptor simply needs to "learn" that these new plugins are now available. This is a process called "Refresh Plugins" and it will run automatically upon quitting Service Center. Refreshing Plugins is discussed in the next section.

## Refresh Plugins

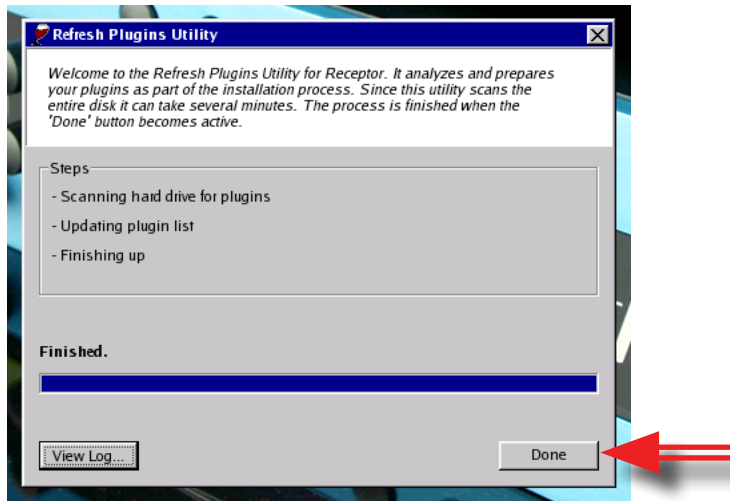
Whenever you add new plugins to Receptor, it needs to "learn" about their existence. This is called "refreshing plugins." During a Komplete 5 installation, plugins are automatically refreshed after you close the Service Center. That process is described here:

**NOTE:** You can also trigger a manual plugin refresh by going to Receptor's **SETUP** View, clicking "Run Utility" in the **INSTALL** Section and, in the pop-up menu that appears, clicking "Refresh Plugins."

- 1 Upon closing the Service Center, Receptor will begin running the Refresh Plugins Utility.  
*This utility analyzes and prepares your plugins for use on Receptor.*



- 2 When the Refresh Plugins Utility has finished, click **Done**.



- 3 Your Receptor's Mix window appears in the Receptor Viewer. Click an Instrument Channel's Source selector and choose one of your new Komplete 5 plugins.



- 4 Start playing!

**NOTE:** Sample-based plugins, such as Elektrik Piano, Akoustik Piano, Battery, and Kontakt 3 will need to have their libraries installed. This is discussed in the next section.

## Installing Komplete 5 Sample Libraries

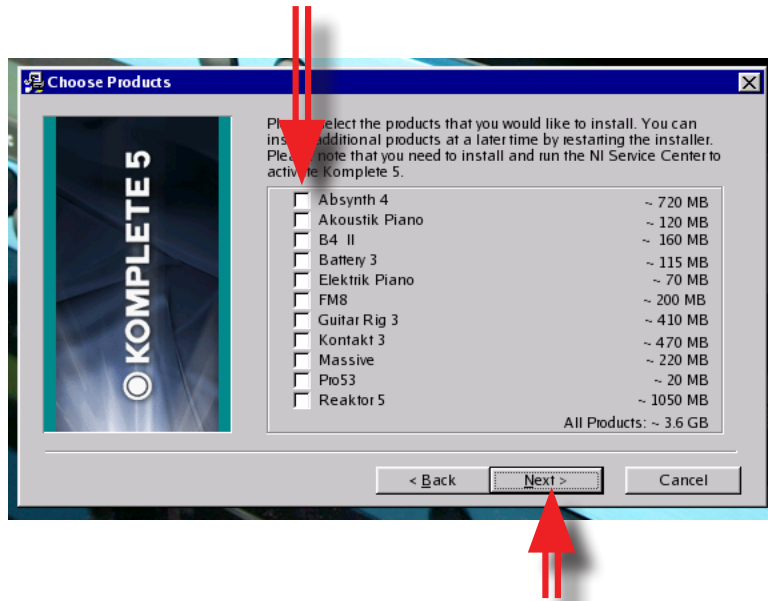
Direct Install works by transferring data from your factory DVD's over an ethernet connection to Receptor. Because Ethernet is much slower than the communication bus inside your computer, it takes much *much* longer to install data this way.

Komplete 5 ships on 12 DVDs, and most of these are sample data. That's a lot of bits and bytes to transmit over ethernet. All totalled, it could easily take over 24 hours to install all these libraries on Receptor!

This is why we recommend that, during Komplete 5 installation, you do not install any sample libraries. But, now that you've installed all the plugins, it's time to start installing the libraries. Because of the extreme amount of time required, Muse Research recommends that you only install only 1 library at a time. Here's how:

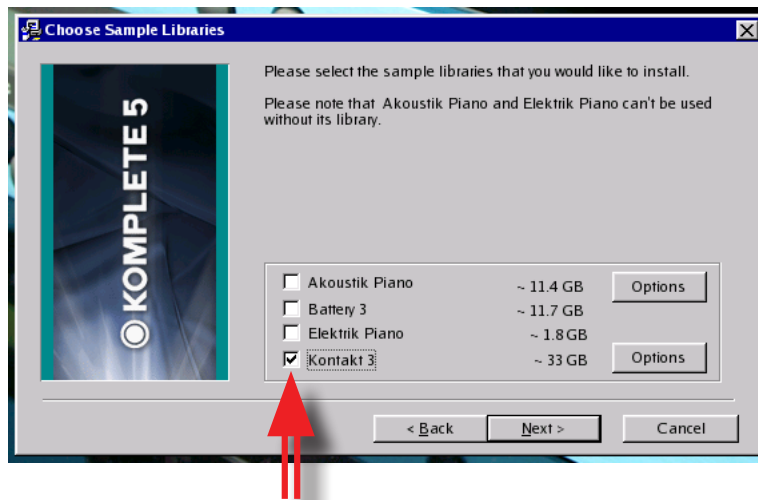
- 1 Launch Receptor Remote Control and follow the steps outlined in "Launch Direct Install" earlier in this document.
- 2 Continue following steps 1-4 as outlined in "Installing Your Komplete 5 Plugins" earlier in this document.

- 3 You will no longer be required to enter a serial number (as outlined in steps 5 and 6) since you've already installed and authorized the actual plugins.
- 4 Next, you'll be asked which Komplete 5 plugins you wish to install. Since you've already installed all the plugins in a previous operation, simply uncheck all the options, and click **Next**.

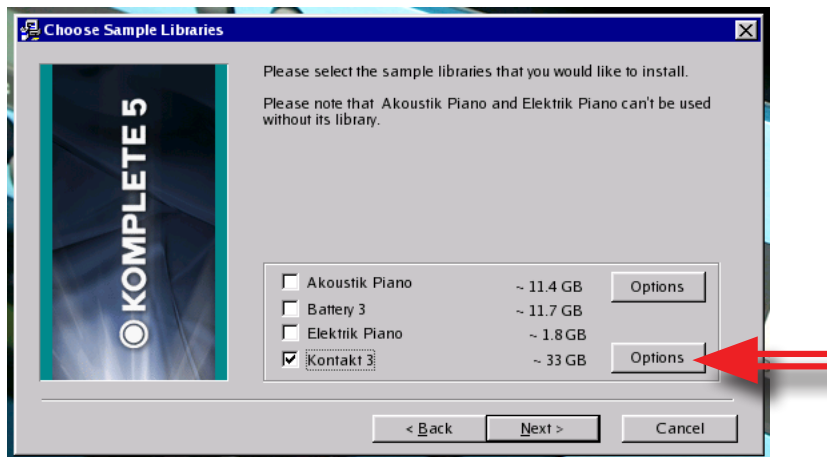


- 5 You'll then be asked with sample libraries you'd like to install. Because you want to break the process into "bite sized" pieces, select only one of the libraries.

*In this example, we've unchecked everything except Kontakt 3.*

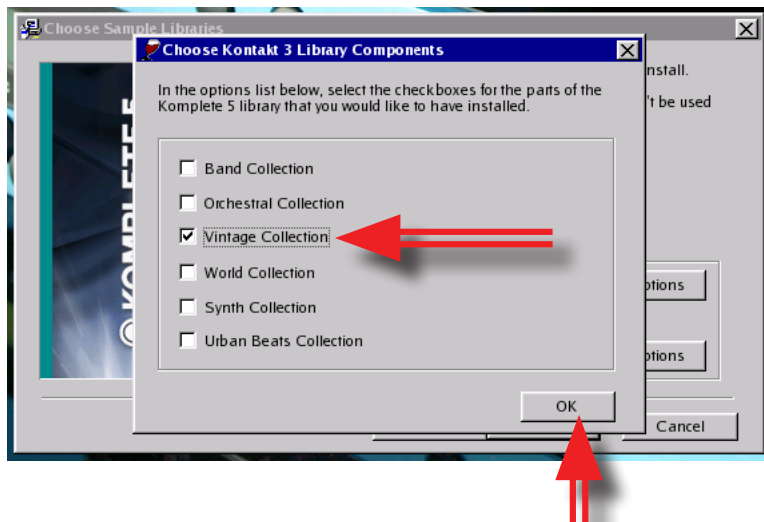


- 6 If the chosen library has an **Options** button, click it.

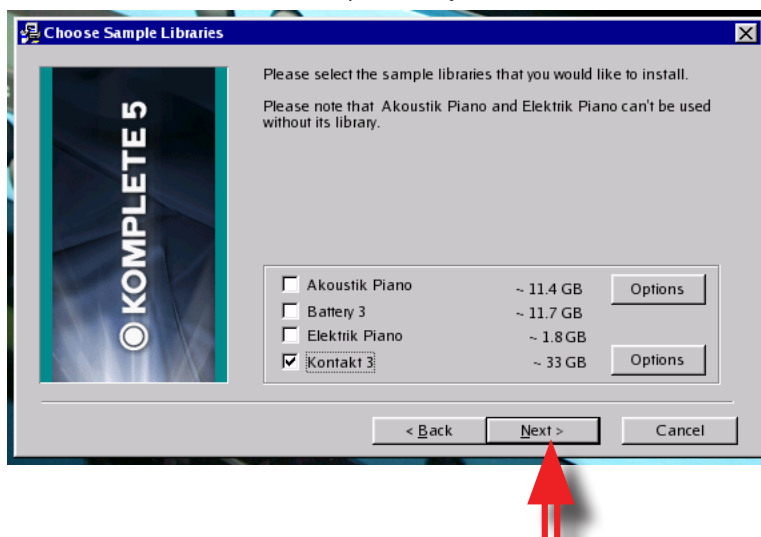


- 7 A window opens in which you can select a sub-library to install. To keep installation times manageable, select one of the sub-libraries, and click **OK**.

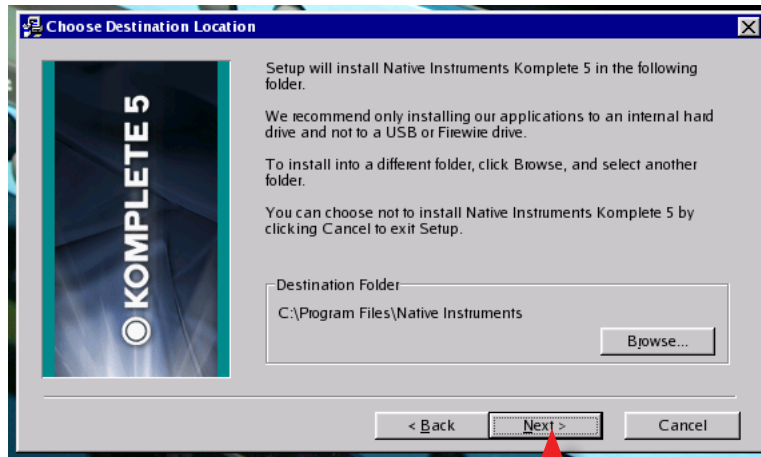
*In this example, because the Kontakt libraries are so large, we've unchecked everything except "Vintage Collection."*



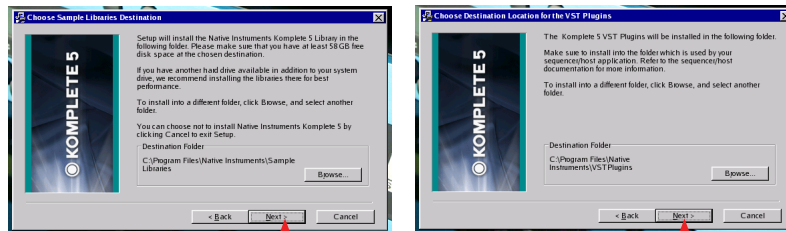
- 8 You'll return to the Choose Sample Library window. Click **Next** to move on.



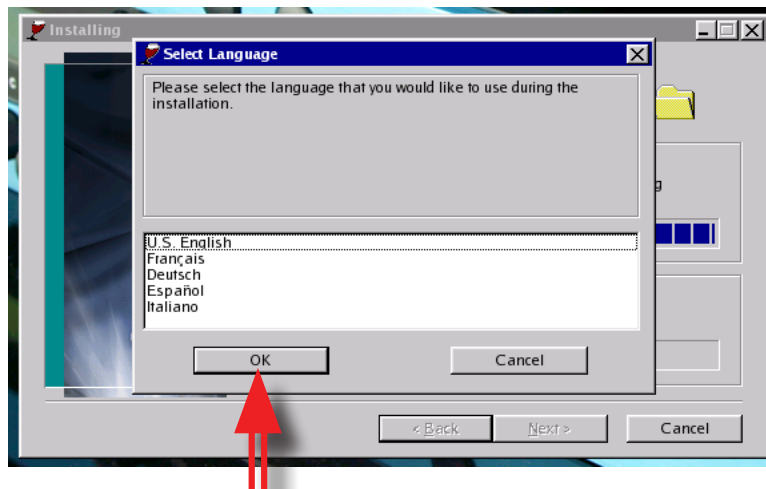
- 9 You'll then be asked where you want to install the software. Accept the default location by clicking **Next**.



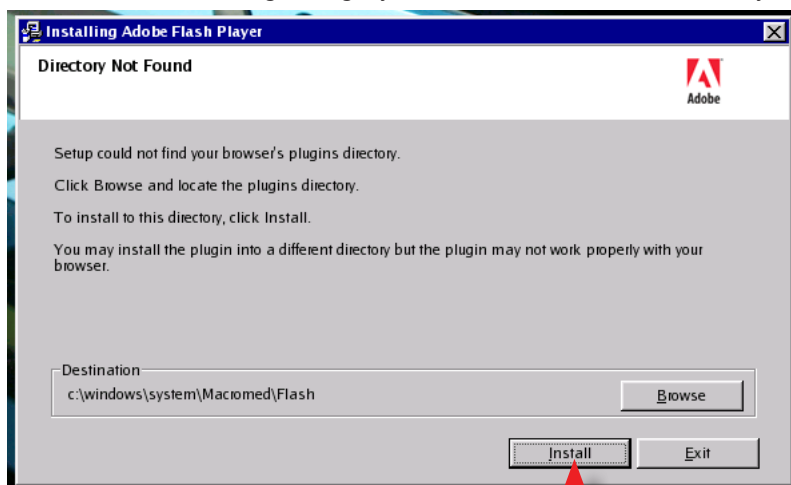
- 10 You may receive several additional dialogs asking you to choose a destination location. In all of them, simply accept the default locations by clicking the **Next** button.



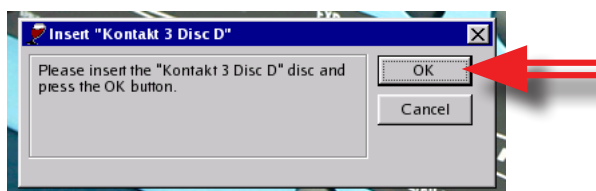
- 11 A few support files will be installed, and then you'll be asked to select a language. Do so, and click **OK**.



- 12 You will then see a dialog asking if you want to install Adobe Flash Player. You do, so click **Install**

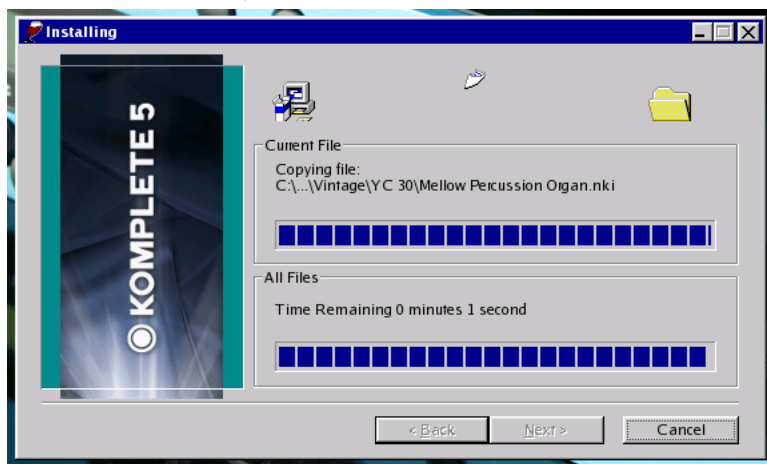


- 13 The installer will then ask for a particular disc. Insert the requested DVD into your computer's optical drive, and click **OK**.



- 14 The library will begin to install on your Receptor.

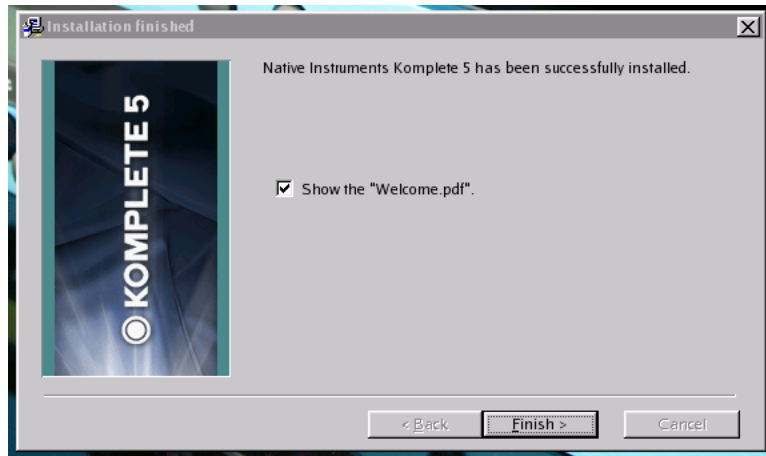
*Note that the estimated times are completely inaccurate. Feel free to do something else during the transfer. Muse Research's experience is that some libraries (like various Akoustik Piano sub-libraries) install in about an hour, while others may require 5 hours or more. So, if you have something better to do than wait for samples to transfer slowly over an ethernet cable then, by all means, do it.*



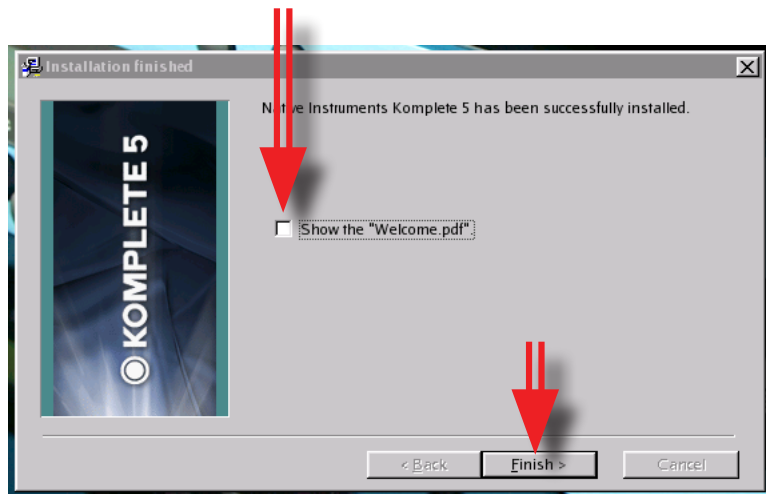
- 15 Some libraries may be spread across multiple discs. If the installer asks you to insert an additional disc, do so when prompted, and click **OK**.

*Note that you don't have to wait around for the installer to prompt you for the second disc. Go out and do something constructive. The "insert disc" request will waiting patiently for you when you return.*

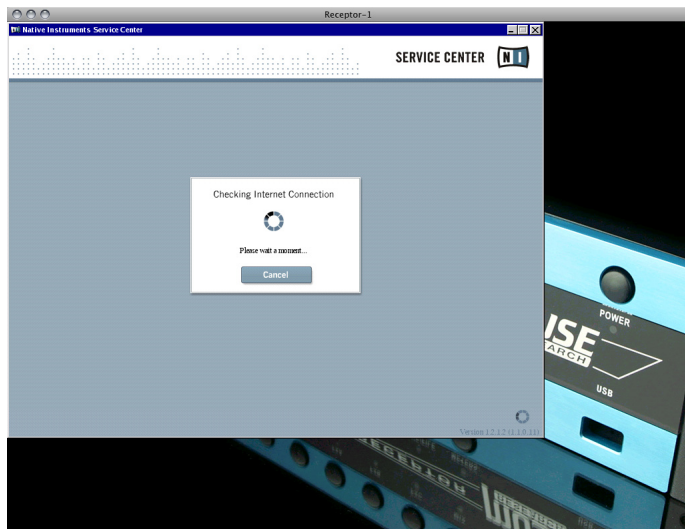
- 16 After the library finishes installing on Receptor, the disc will eject and you'll be presented with the option of showing the "Welcome.pdf".



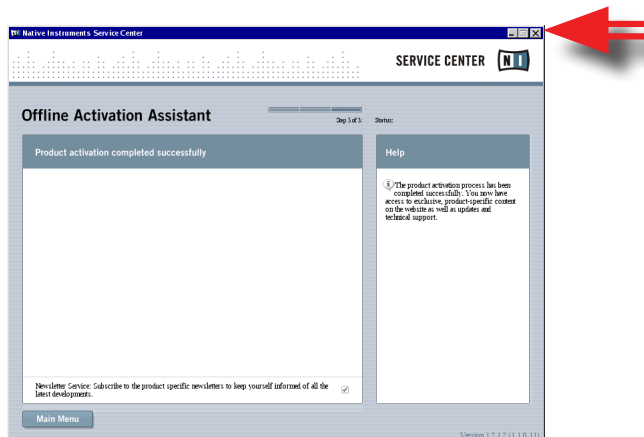
- 17 **Uncheck** (disable) this option (since there is no pdf viewer on Receptor), and click **Finish**.  
Uncheck the "Welcome.pdf" display option



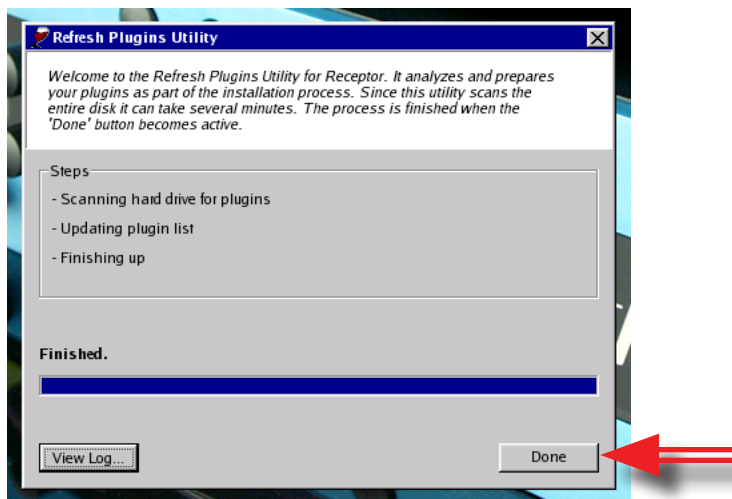
18 After a minute or so, the Native Instruments Service Center will launch.



19 Since, you've already authorized the plugins, simply click the Service Center's **Close** box in the upper-right corner to stop it from running.



20 The Refresh Plugins Utility (discussed in the section called “Refresh Plugins”) will automatically run. Click **Done** when the process is finished.

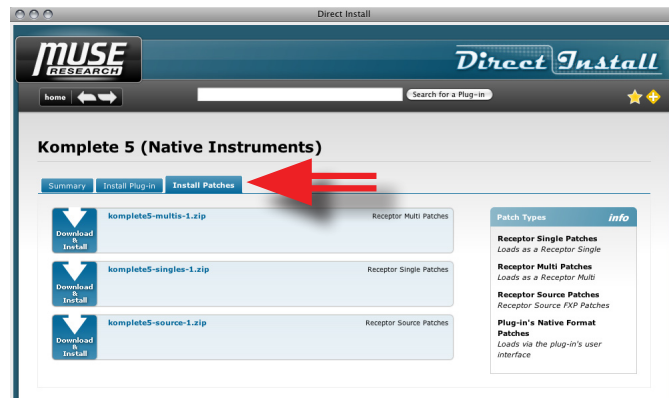


21 Receptor's Mix view is now shown in the Viewer and you now have use of the library you just installed. Continue installing more sample libraries using this method.

# Installing Komplete 5 “Receptorized” Patches

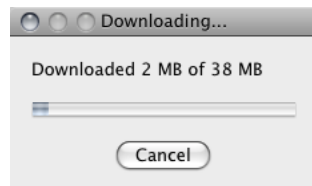
Many of the patches that ship with Komplete 5 have been “receptorized” — meaning that you can load Mult, Single, and Source patches using Receptor’s patch management functionality. You can download and install these Receptorized patches using Direct Install:

- 1 Launch Receptor Remote Control and follow the steps outlined in “Launch Direct Install” earlier in this document.
- 2 Continue following the instructions outlined in “Finding Komplete 5 in the Plug-in Compatibility Database” earlier in this document.
- 3 When Komplete 5’s Direct Install Status window appears, click the Install Patches tab.

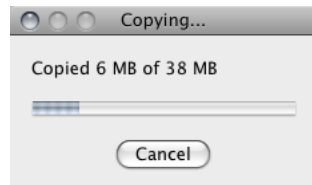


*You’ll see a list of all the Receptorized patches available for Komplete 5.*

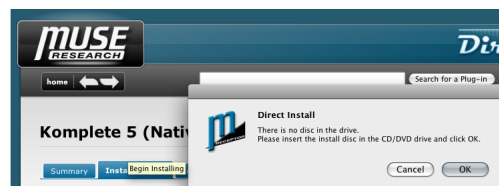
- 4 Click the top .zip file to download all the Receptor Multi patches for Komplete 5.  
*The patches will download to your desktop computer*



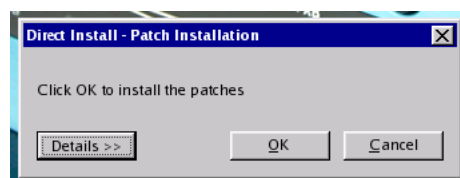
*After downloading, the patches will automatically be copied to your Receptor.*



- 5 A dialog appears telling you that a Remote Viewer needs to open for your Receptor, so click **OK**.



- 6 In your Receptor Viewer window, Direct Install will ask if you want to install the patches, so click **OK**.



- 7 The patches are installed on Receptor.
- 8 Repeat this patch installation process for the Single patches and Source patches.

## Updating Plugins

One thing you can count on about software: by the time you purchase a new software package and take it home, there's probably already an update available on the web. Complete 5 is no exception. There are updated versions of all the plugins on the Native Instruments website. There are also some updated libraries.

After you'd installed all the plugins and libraries from your Complete 5 DVDs, you'll probably want to update your plugins to the latest version. The following sections tell you how.

---

### Download Updates from Native Instruments

- 1 Go to the Native Instruments website and click the **Updates** link.
- 2 Log In with your username and password

*You'll be presented with your Personal Update Manager page.*

#### PERSONAL UPDATE MANAGER

**Please check the product version displayed in the about screen of the software before downloading updates and patches!**

The system remembers which files you have already downloaded.  
Critical updates appear on a red background.

If you are looking for **unprotected updates** (without log-in) [click here...](#)

**Please select:**

☐ Do not display files that I have already downloaded.

- 3 In the drop-down updates lists, select **Complete 5** and **Win**, then click **Send**.

*Remember, even if you're using a Macintosh, Receptor runs the Windows versions of plugins, which is why you only want to download and install plugins made for Windows.*

#### PERSONAL UPDATE MANAGER

**Please check the product version displayed in the about screen of the software before downloading updates and patches!**

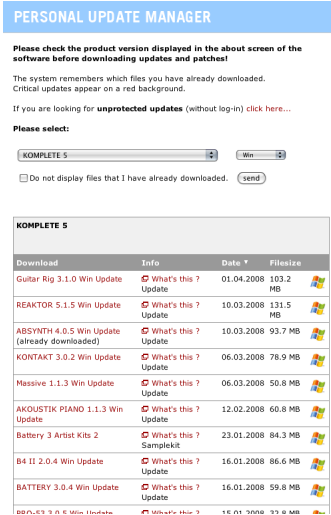
The system remembers which files you have already downloaded.  
Critical updates appear on a red background.

If you are looking for **unprotected updates** (without log-in) [click here...](#)

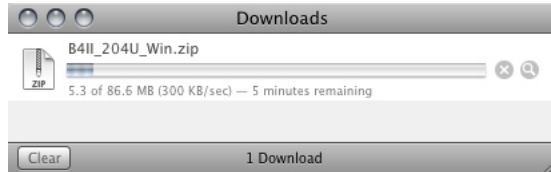
**Please select:**

☐ Do not display files that I have already downloaded.

- You'll see a list of all the available software updates for Komplete 5. Click the name of an update to download it.



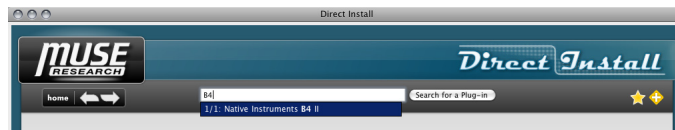
- In this example, we've downloaded an update to B4 II.  
*The updated B4 II zip file is being downloaded to the computer's Downloads folder.*



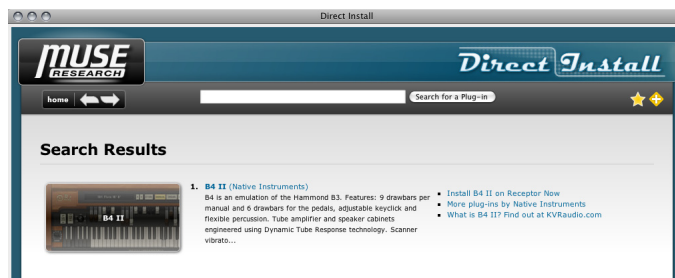
## Install Updates on Receptor

- Launch Receptor Remote Control and follow the steps outlined in "Launch Direct Install" earlier in this document.
- In the Direct Install window's **Search** field, begin typing the name of the plugin whose update you wish to install.

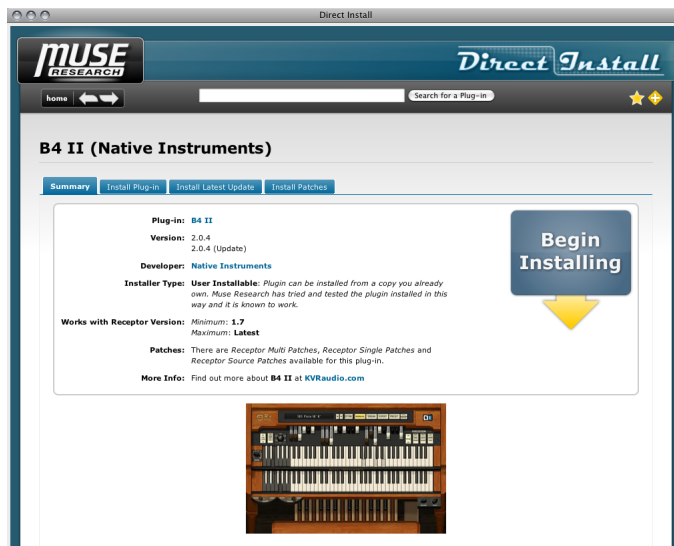
*In the case of this example, we've typed "B4".*



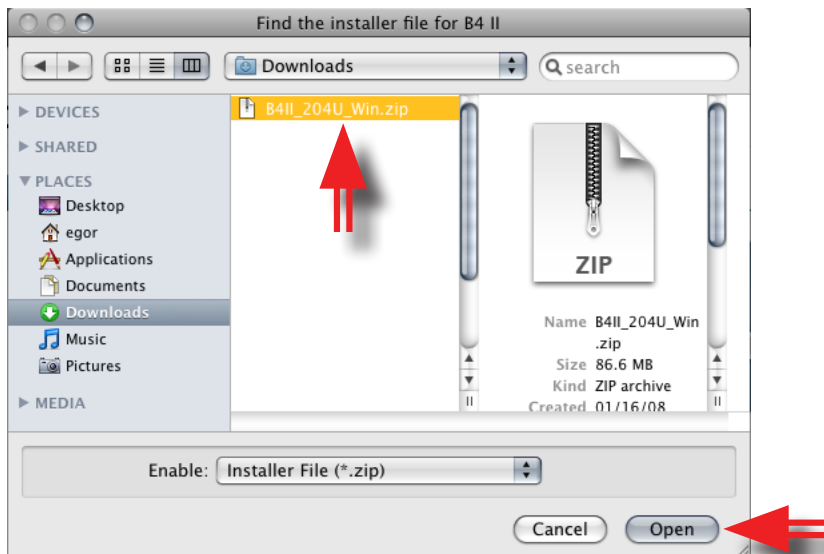
- Select **B4 II** from the drop-down list (highlighting it), then click **Search for a Plug-in**.  
*The Search Results page will display all the plugins that matched your search criteria.*



- 4 Click the name (or icon) of the plugin you wish to install (B4 II in the case of this example).  
*The Plugin's Direct Install Status window appears.*



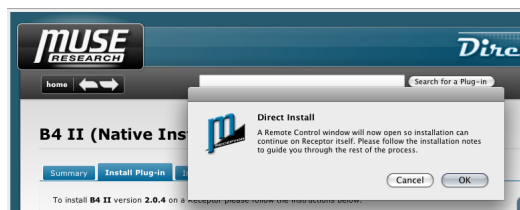
- 5 Next, you'll be asked to find the installer file for the selected plugin.  
*In our example, we downloaded B4II to our downloads folder, so we navigate to that file and click **Open**.*



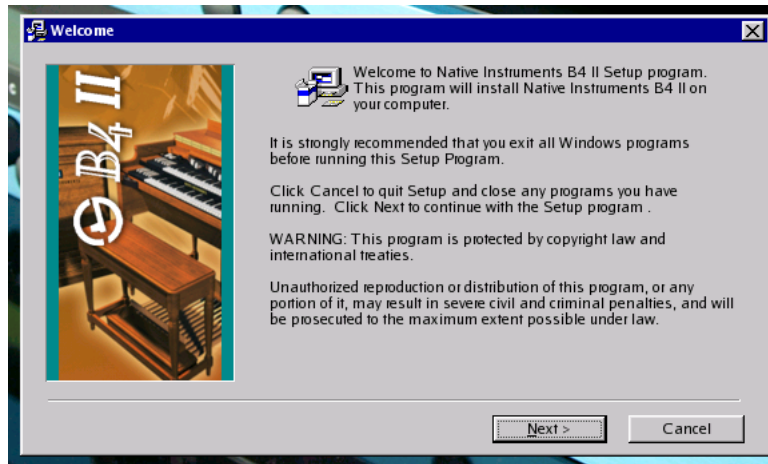
- 6 The installer file is copied to Receptor.



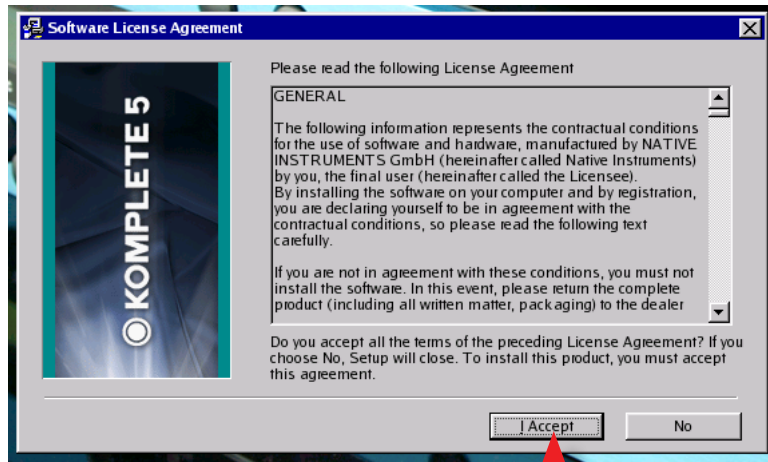
- 7 You're told that Receptor's Viewer window needs to open, so click **OK**.



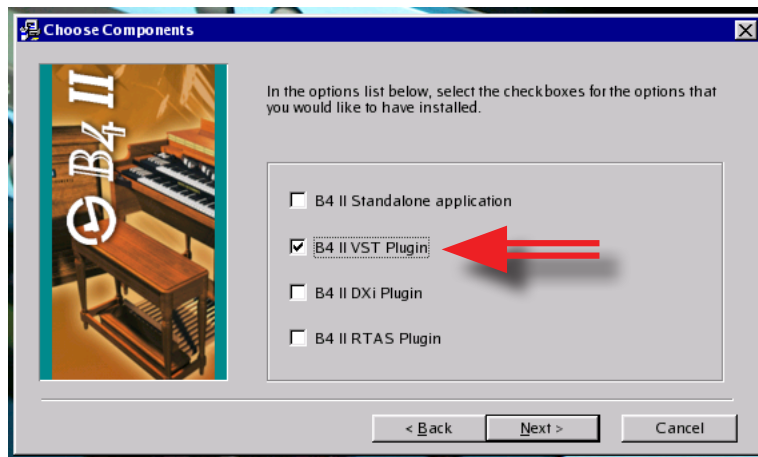
- 8 Receptor's Viewer window opens and the N.I. Installer welcomes you. Click **Next**.



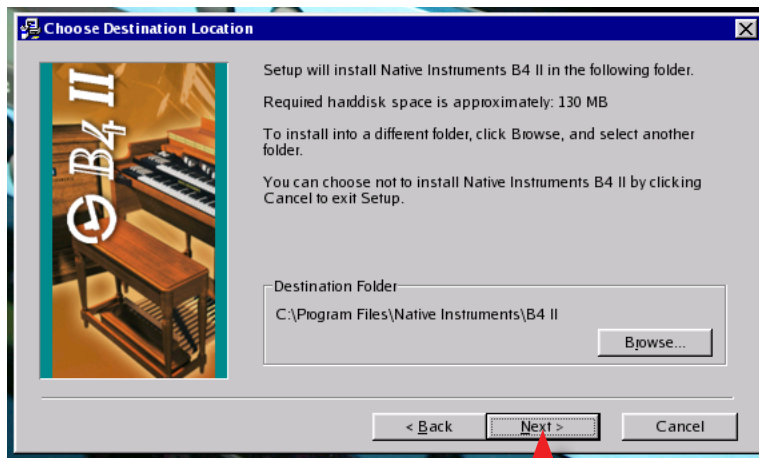
- 9 Accept the License agreement by clicking **I Accept**.



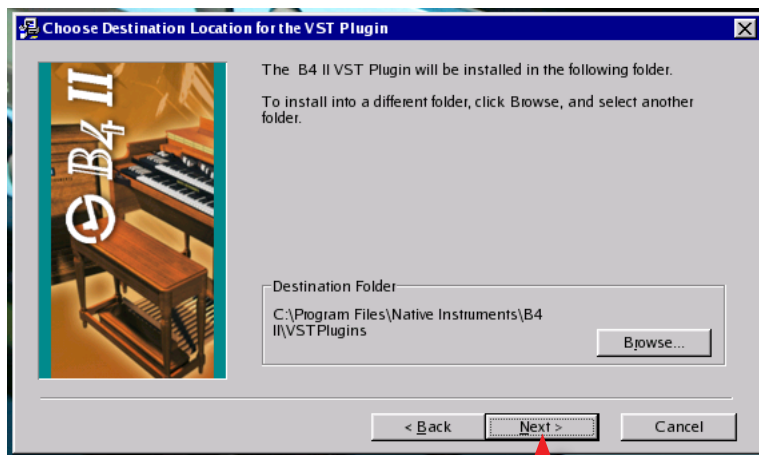
- 10 You want to install only VST Plugin, so uncheck all options except the VST, then click **Next**.



- 11 Next, the Native Instruments installer will ask where you want to install the software. You will use the default destination folder, so simply click **Next**.



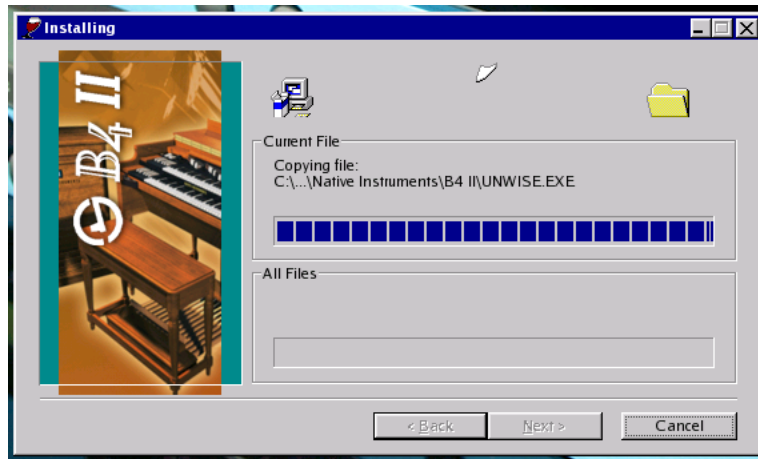
- 12 More dialogs will appear asking you to choose various file destinations. You will always want to accept the default destinations, so just click **Next** whenever you see one of these destination dialogs.



- 13 If you get a window asking where to add the Plugin icons, simply click **Next**.

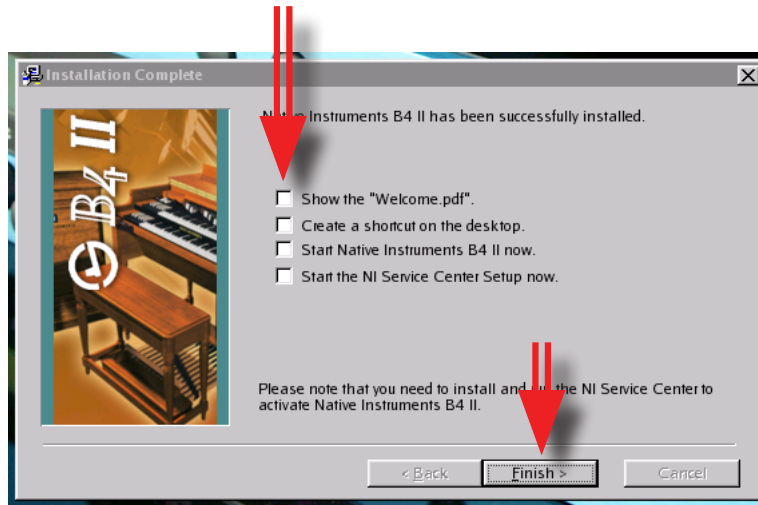


- 14 The plugin update (B4 II in the case of this example) begins to install.

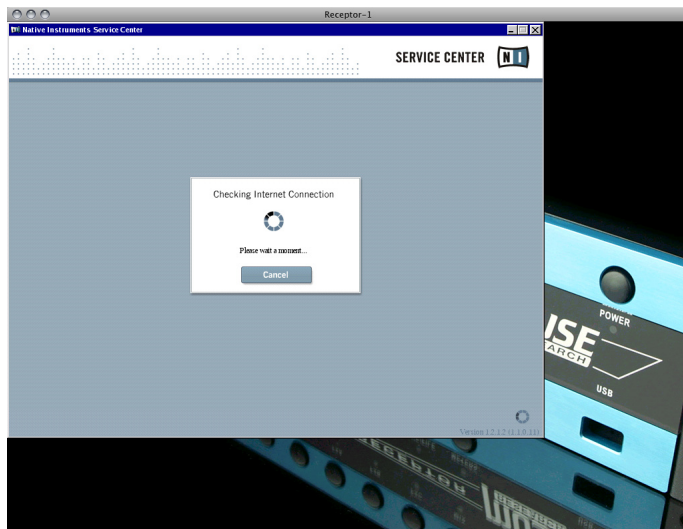


- 15 After the update finishes installing on Receptor, you'll be presented with a number of options, such as showing the "Welcome pdf," or creating a shortcut on the desktop. These are all computer-specific options and do not actually relate to Receptor installation, so **Uncheck** (disable) all these options, and click **Finish**.

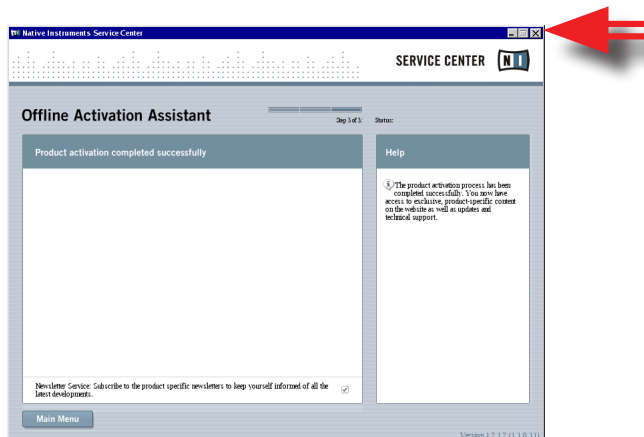
Uncheck all the options



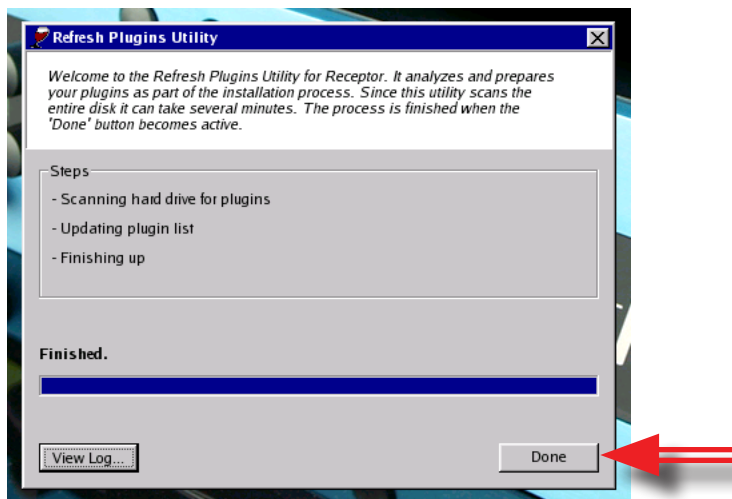
16 The Native Instruments Service Center will automatically launch.



17 Since you've already authorized the plugins, simply click the Service Center's **Close** box in the upper-right corner to stop it from running.



18 The Refresh Plugins Utility (discussed in the section called “Refresh Plugins”) will automatically run. Click **Done** when the process is finished.



19 Receptor's user interface is shown in the Viewer and you now have use of the update you just installed.